

# COMMUNITY LINK

JANUARY 2008

CITY OF  
CHATFIELD

## INSIDE THIS ISSUE:

<b>HILLTOP ES- TATES</b>	<b>1</b>
<b>FUN FACTS</b>	<b>1</b>
<b>CHILLFEST</b>	<b>2</b>
<b>CHRISTMAS TREE DIS- POSAL</b>	<b>2</b>
<b>MEETING DATES</b>	<b>2</b>

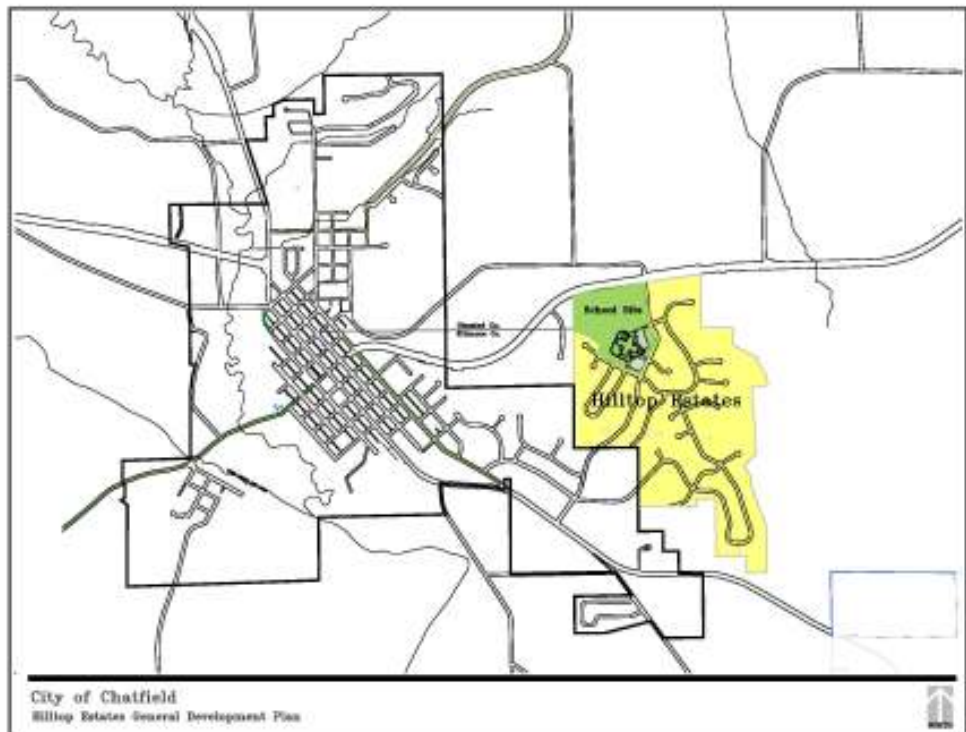
### Hilltop Estates

#### Fun Facts:

- 261.47 acres (362 single-family lots)
- 55 acres—Elementary School
- 43 acres—Ponds/Wetlands
- 7.07 acres—Parks
- 1.05 acres—Water Tower
- 28 phases of 10–13 lots per phase

## HILLTOP ESTATES AND THE SCHOOL....

The Hilltop Estates General Development Plan illustrates how this development will fit into the community. The natural terrain of the area has caused the town to grow along the valley, making the community relatively long and narrow. As Hilltop Estates develops, the town will begin to “square up” as growth will begin to occur at the higher elevations to the immediate east of the city. The school will anchor the entire development as it is likely to draw residents to that area. The residential portion of the subdivision will be developed in phases of 10–13 lots per phase, which will provide residential opportunities for many years to come.



While the town is not expected to grow any more quickly than it has in the past, the community is well poised to move into its next phase of growth. While the housing market is not the most encouraging at this time, having an elementary school associated with this development makes the development more viable than it would be without a school. The recent expansion of the recreational trails in the park, improving the parks' playground equipment and improving the school facilities are all decisions on which the community can build. When one considers the importance that people place on schools and recreational opportunities when choosing where to make their home, it is clear that the work of many people throughout 2007 has positioned Chatfield well as possible for the future.

## CITY OF CHATFIELD

[www.ci.chatfield.mn.us](http://www.ci.chatfield.mn.us)

Phone: 507-867-3810

Fax: 507-867-9093

21 Second Street SE

Chatfield, MN 55923

### In Case of Emergency:

9-1-1

Ambulance (Non Emergency)

507-867-4446

Police (Non Emergency)

507-867-3331

Chatfield Public Library

507-867-3480

## CHRISTMAS TREE DISPOSAL

The annual Christmas tree pickup will be conducted on Saturday, January 5th. Please have your tree on the curb by 9:00 a.m. and, naturally, be sure that all decorations, lights, etc., have been removed. No tree-bags, please!!

This wonderful community service project is provided by the "Pioneer Kids," who are sponsored by the Pioneer Presbyterian Church, under the supervision of Pam Bluhm.



The community is grateful to Pam and the Pioneer Kids!

## JANUARY 2008

- Tue Jan 7th— Planning & Zoning 7:00 pm
- Mon Jan 14th— City Council 7:00 pm
- Tue Jan 22nd- Heritage Preservation Commission 7:00 pm
- Mon Jan 28th- City Council 7:00 pm
- Thu Jan 24th- Economic Development Authority 5:30 pm

## FEBRUARY 2008

- Mon Feb 4th- Planning & Zoning 7:00 pm
- Mon Feb 11th- City Council 7:00 pm
- Tue Feb 19th— Heritage Preservation Commission 7:00 pm
- Mon Feb 25th- City Council 7:00 pm
- Thu Feb 28th-Economic Development Authority @ 5:30 pm

## CITY OFFICIALS

### MAYOR

Curt Sorenson (507) 867-3810  
csorenso@amfam.com

### COUNCILORS

Brenda Johnson (507) 867-4650  
brenda.johnson@attglobal.net

Russ Smith (507) 867-4711  
rsmith@mcghiebetts.com

Paul Novotny (507) 867-3549  
paulcti@qwestoffice.net

Ken Jacobson (507) 867-4759  
chatfieldjake@yahoo.com

Ginny Engle (507) 867-4701  
gineng2@aol.com

## CHILL FEST 2008-

FRIDAY & SATURDAY, JAN 25TH & 26TH

Chill Fest is less than a month away!

Here are some of the activities being planned. For General information, contact Matt Opat 867-4080 or Mike Martin 867-3134.

### Friday, January 25th

- Ladies Scrap Night 7:00 p.m. City Hall \$5.00 donation Contact Christina Stevens 867-3205

### Saturday, January 26th

- Family Sledding Party—10:00—12:00 Noon Chatfield High School—Bring your own tubes & Sleds. Contact—Christina Stevens 867-3205
- Chili & Salsa Contest (the dip not the dance). Contact—Jackie Hrstka 867-3744 for details.
- Illuminated Standstill Parade 6:00-7:00 p.m. Contact—Al 867-4813 for details.
- Polar Plunge 2:00 p.m. Contact— Dave 867-3856 or Kevin 867-4158 for details.
- Winter Encampment, Groen Park— Contact—Roy Giethbrock 867-4697 for details.
- Family Games—Organized by Stacy Fritz & FFA Students, also Chatfield Scouts will be organizing a Turkey Bowling fund raiser.



Sled Dog Teams, Horse Wagon Rides, Food & Beverage Vendors

- Chili Supper 4:30—7:00 p.m. Presbyterian Church

Any other business, organization or individual wishing to host or sponsor an activity during Chill Fest is encouraged to contact Matt Opat 867-4080 or Mike Martin 867-3134.

Hosted by Chatfield Lions Club



## ICE RINK

### Warming House Attendant Hours

Monday—Thursday	4:00 pm—8:00 pm
Friday	4:00 pm—9:00 pm
Saturday (Early)	11:00 am—5:00 pm
Saturday (Late)	7:00 pm—9:00 pm
Sunday	2:00 pm—8:00 pm

Ice Rinks are open during all other day—time hours.