

Park & Recreation Committee  
January 23, 2023 Agenda  
5:30 p.m.

1. Park & Recreation Committee – 5:30 p.m. – January 23, 2023
2. Shady Oak Park:
  - a. Determine desired features to maintain in the park
  - b. Determine if a grant application should be submitted to replace and/or acquire new equipment.

---

---

**MEMORANDUM**

---

---

**TO:** CHATFIELD CITY COUNCIL  
**FROM:** JOEL YOUNG, CITY CLERK  
**SUBJECT:** SHADY OAK PARK INFORMATION  
**DATE:** 12/15/22  
**CC:**

---

Attached are the pages that reference Shady Oak Park in the City's Park Master Plan. As you will see, there are objectives and recommendations that directly address the camping amenities and an objective that seems to address sidewalks.

To date, we have not been able to determine how the City came to own the property that is Shady Oak Park, however, the attached documents were found in the City's files. We didn't find any references to these transactions in the city council minutes of 1918 and 1920. Presumably, a title search could develop more information but that won't be completed unless it is determined that it is necessary to do so.

If the City Council would like to consider disposing of the property or if there is a desire to discuss the value of neighborhood parks, the City Council should consider asking the Planning Commission to assist, as the Planning Commission is responsible to maintain the City's Comprehensive Plan and the other sub-plans, such as the Park Master Plan.

# Parks, Trails, and Recreation Master Plan 2016



Final

*Submitted to*  
City of Chatfield, MN

Updated, September 2017





## Classification of Chatfield's Parks

The City of Chatfield classifies each park based on use and the users the park serves that was developed by the National Recreation and Park Association (NRPA) to be used as a resource to describe most types of parks. These standards are meant to be modified to address a specific agency and the unique types of parks that a city has to offer. Each park was classified under the category that met the broadest definition of amenities provided and the users it serves. The Chatfield classification system includes: a Regional Park, Community Parks, Neighborhood Parks, Mini Parks, Private Recreation, and Public Schools.

### Mini Neighborhood Parks

Mini parks generally address specific recreation or open space needs. This type of park is usually created of a single lot or irregular piece of land and is intended to serve users directly adjacent to it. Often these parks are too small for recreational use but sometimes may accommodate a small playground and places to sit outside. Mini parks can add value to the adjacent private properties if they fit their surroundings and have desirable uses.

**Service Area:** Typically the service area for a mini park is less than (0.25) one square mile.

**Park Size:** Typically these parks cover less than one acre and accommodate no more than one or two users. Often such parks provide only benches or picnic tables.

NRPA standards call for between 0.25 to 0.5 acres of neighborhood parkland per 1,000 residents. Ranging in size from 0.25 acres to 1.4 acres. Hendricks Park is .33 acres and contains a bench for 1-2 people and would fall into the standardized NRPA guidelines.

### Neighborhood Parks

Neighborhood parks are considered the basic unit of a community's park system and provide a recreational and social focus for residential areas. These parks desirably provide space for informal active and passive recreational activities. Park space is provided for recreational for recreational activities such as field games, court games, picnic facilities and playground equipment. Neighborhood parks may contain amenities that serve the community as a whole. An example of this is an athletic field that is used by an athletic organization.

**Service Area:** The typically service radius for neighborhood parks is between (0.25) one quarter and (0.5) one half mile. A neighborhood park should be easily and safely accessed by the neighborhood it serves, uninterrupted by major roads or any other barrier.

**Park Size:** Neighborhood parks must be a size adequate enough to accommodate facilities that successfully serve a neighborhood. Such parks should contain at least 3 acres if possible. Of this total acreage, 2-3 acres should be relatively flat open space area suitable for a number of activities, including "pick up" ball games and room to run or throw a ball.

NRPA standards call for between 1 to 2 acres of neighborhood parkland per 1,000 residents. Chatfield currently has about 9.74 acres of neighborhood parkland. This translates into 3.74 acres per 1,000 residents.



## Shady Oak Park Inventory

Size	1.41 Acres
Land Cover	Mowed turf and oak tree cover
Recreational Facilities / Activities	A tot lot area, benches, fire pit, sand volleyball court, sandbox, removable restrooms, and RV Camping area.
Buildings / Shelters	Small covered sandbox and a shelter-concrete pad
Pedestrian Accessibility	No sidewalks, some steep grads along Prospect Street
Parking	Parking Prospect Street
Signage	One monument sign along Prospect Street
Utility & Capacity Issues	Limited
Frequency of Use	Medium
Maintenance Requirements	Medium
History	
Donations / Gifts and Donor	

### Goals:

- To create a neighborhood park that is easily accessible and provides for a variety of family friendly activities.

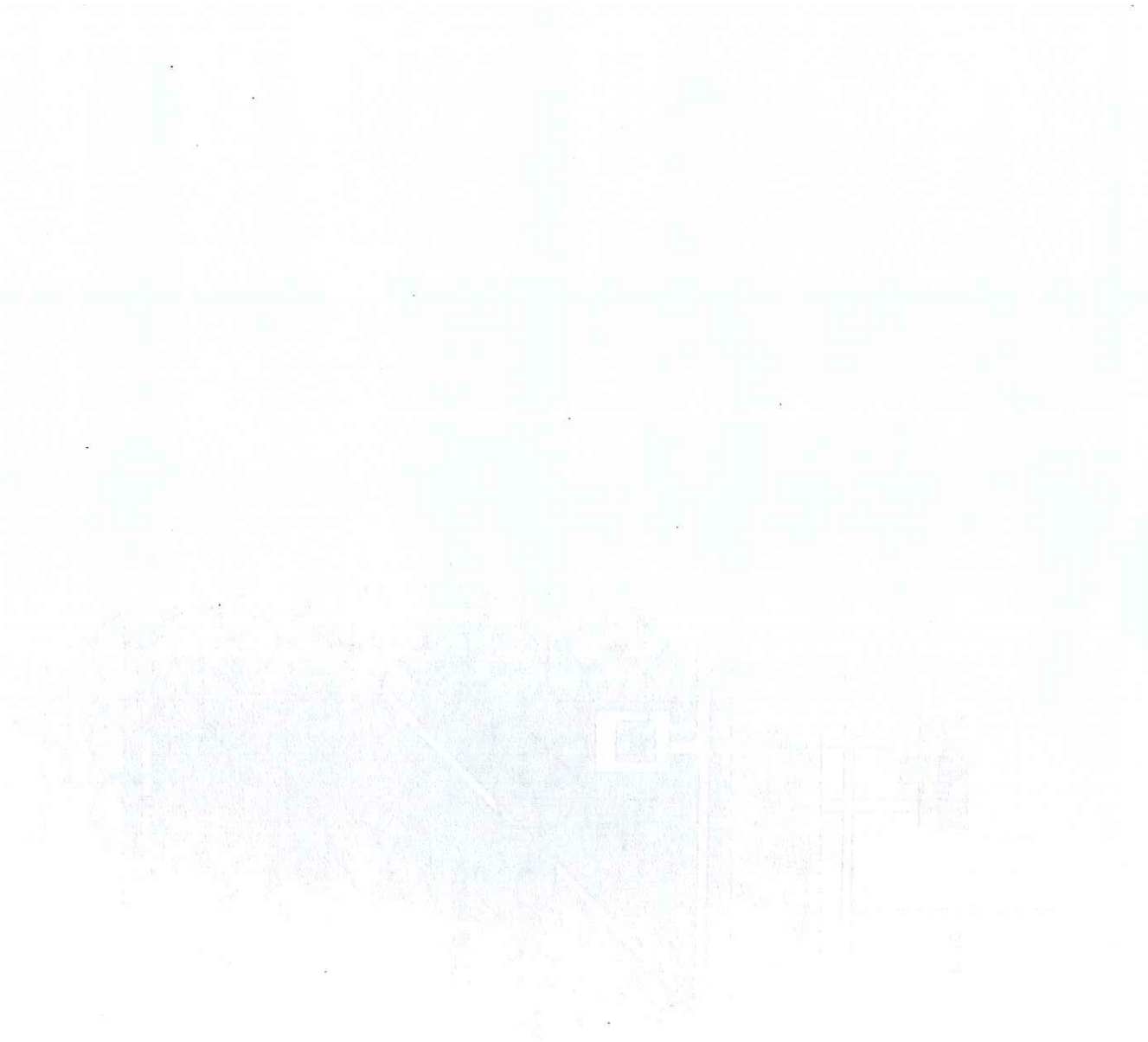
### Objectives:

- Remove and improve park facilities to encourage family use.
- Phase out the RV Park sites as other sites are established in other park areas in Chatfield.
- Make the park safer and easily accessible for pedestrians.

### Recommendations:

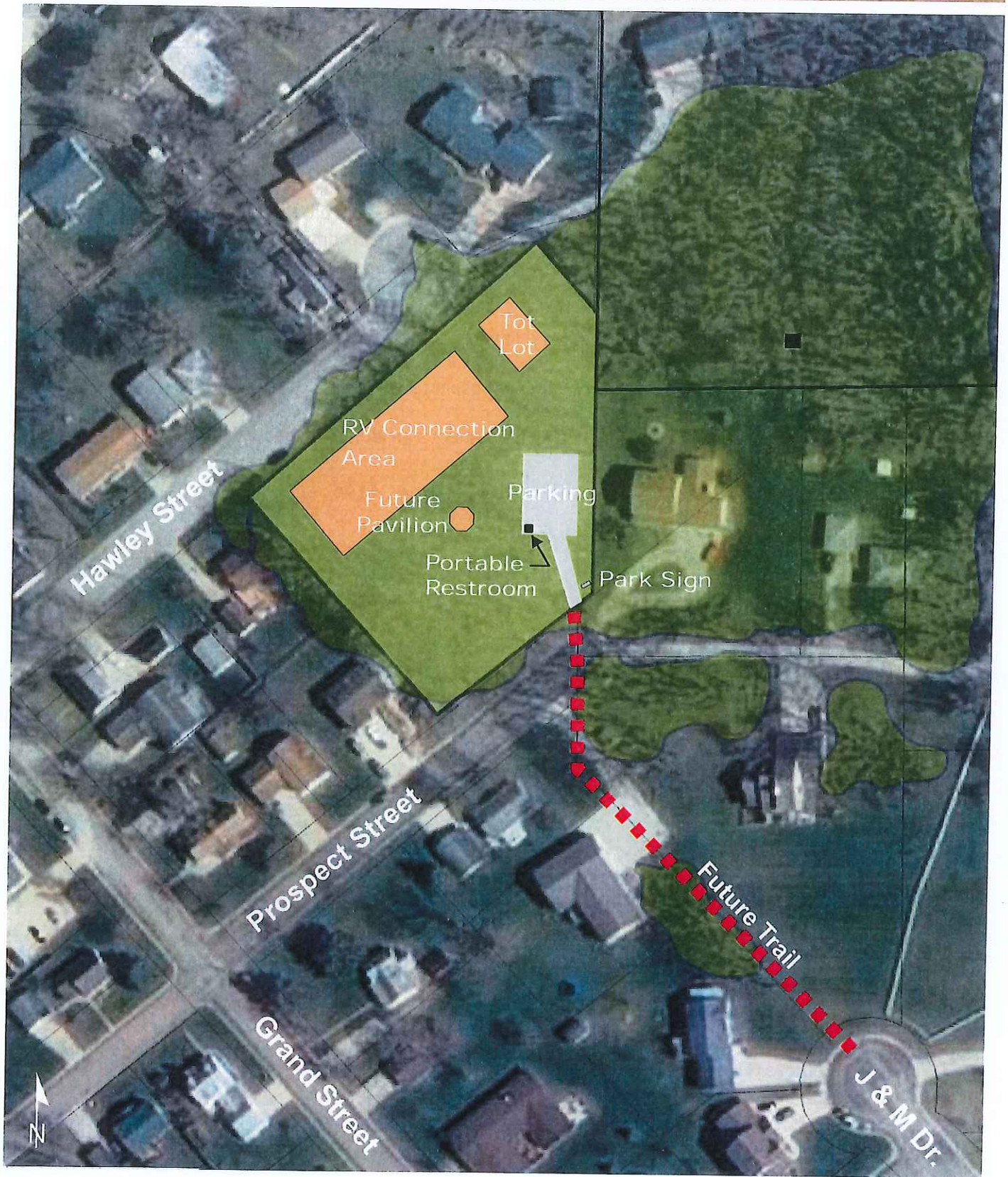
- Install a new picnic shelter in the same location of the previous pavilion
- Remove the RV camping amenities and restore the area to turf.
- Remove the old fire pit and restroom when RV camping is removed.
- Add picnic tables throughout the park.
- Improve the vitality of the grass by trimming some lower branches of the oaks, removing some small areas of grass and increasing the level of turf maintenance.

- Add a connecting trail from the Park to John and Mary Drive along the easement as shown on the map.
- Install shrubs along the perimeter adjacent to the private homes and yards to enhance the park's definition.
- Maintain the Oak Stands and watch for Oak Wilt.
- Plant other varieties of trees.





# Shady Oak Park



0 20 40 80 Feet

