

***Public Works Committee
Meeting Agenda
June 13, 2022 5:30 p.m.
Fillmore Conference Room – Thurber
Building***

1. June 13, 2022 / 5:30 p.m. Fillmore Conference Room - Thurber Community Building
2. Mountain Biking Update – Gavin Carr
3. Consider request of resident to purchase city property.
4. EV Charger Update – Marty Walsh
5. Consider parking request by Growers Market
6. Consider banner cable across Main Street

Members Present: Councilor Paul Novotny.

Members Absent: Councilor Mike Urban.

Others Present: Craig Britton, Brian Burkholder & Joel Young.

City Engineer Report: Britton reported that he had talked with Osseo Construction to ensure that they were willing to remove certain aspects from the project to make the project more affordable. This removes approximately \$170,000 of improvements to the Old Territorial Road reservoir and reduced the mobilization costs. Based on this work, Britton recommended that the contract be awarded to Osseo.

Growers' Market Parking Request: The committee discussed the request of the growers market to reserve three parking spaces on Third Street, from 2:00 – 6:00 p.m., with a 15-minute parking limit. Public Works would make up the signs and the growers' market would be responsible for putting up and taking down the signs. The committee expressed concerns about possibly displacing others who park in that location for other reasons.

Consider request to close 5th Street: The committee agreed to recommend that one-half block of 5th street be closed, just north of Twiford Street, to accommodate the needs of the construction at the art center.

Public Works Staffing: Six people had been interviewed and Burkholder recommends hiring Ryan Nosbisch and Gage Bartels for the summer help position and he suggested that David Sladek be hired to fill in when needed. Kevin Koch is recommended to be hired for the full seasonal position. Recommend approval.

Sewer Back-up Report: Burkholder reported that a house on North Main Street has suffered a second sewer back up this year. When opening the Main, a lot of rags and a large rock was found in the sewer main. Burkholder said that he asked the owner to provide receipts for expenses and proof of insurance decisions. This matter will be revisited when more information is submitted.

Banner Cable across Main Street: The committee reviewed information from St. Charles. They paid \$16,000 for the pole plus the cost of installing the pole with 4' x 4' concrete and re-rod.

Logging on Enterprise Drive: No new information was available.

MEMO

From: Gavin M. Carr *GC*
To: The City Council
Subject: Changes on the New Property

There are some changes that I would like to make to the new property. Here I will explain them.

Trails

Thank you guys so much for allowing us the new property to bike on. Me and my friend have been on it and it is a great place to mountain bike. Unfortunately, the ground on the property is very rough and full of gopher holes and I was wondering if we could get permission to build smooth paths and trails to bike on. These would be simple with no obstacles for a start so that people are way less likely to get hurt. These could be done by me and my friends so that we don't have to gather volunteers yet.

Fence

Currently there is a barbed wire fence around the property making it very difficult to get us and our bikes in and out of the property. I would request that a designated section of barbed wire could be cut out, and an entrance formed.

Signs

I would love to put up different signs that help people know about the trails. Here are a few suggestions.

1. A rule sign by the entrance stating the rules and to enter at your own risk and we are not liable for injury.
 2. Signs at the head of trails stating its difficulty in mountain bike fashion with the designated colors and shapes for different difficulties.
-

These are the changes I would like to make at this meeting if possible. Thank you for your time.
Thanks,
Gavin Carr



City of Chatfield

Thurber Community Center • Chatfield Municipal Building
21 Second Street Southeast • Chatfield, Minnesota 55923 • 507-867-3810
www.ci.chatfield.mn.us

MEMORANDUM

TO: PUBLIC WORKS COMMITTEE
FROM: CRAIG BRITTON
SUBJECT: REQUEST BY JARED HALLORAN TO PURCHASE CITY OWNED PROPERTY
DATE: JUNE 8, 2022
CC: CITY CLERK, JOEL YOUNG
SUPERINTENDENT OF CITY SERVICES, BRIAN BURKHOLDER

Action Requested: Provide input on Jared Halloran's request to purchase City owned property adjacent to the Halloran property on the north side of Donegal Lane.

Background: The City received an email from Jared Halloran on May 20th where he requested to purchase City owned property adjacent to and north of their property at 550 Donegal Lane. The property Mr. Halloran referenced is Outlot B of the Fingerson & Donahue First Subdivision. Below is the email request from Mr. Halloran.

I would like to make a formal request to purchase some additional land located behind my house from the City. There is an outlot behind my house that I have been maintaining since moving into our home at 550 Donegal Ln SE a few years ago. I can send you a picture to make my request easier to understand showing current property lines.

If I were to have more control of the land (mainly the wooded area) my objective would be to clean up the underbrush (left side of the picture) and continue to maintain the open lot to give my children area to play, explore, and grow. It's really a beautiful area back and there and because of the trees/hillside, it is really only usable by me. I cannot stress enough that this is not a fiscally motivated decision, in fact, it would increase my property taxes so the economic benefit would be that of the City's.

For background - I made a similar request when we first moved in and I was denied because of Retention Pond Maintenance by the city but now that the development is starting to fill up on Amco Ln, I would like the request to be formally addressed again to see if there is still that need.

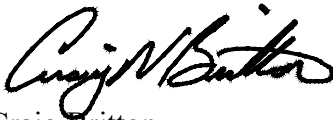
If you have some time to meet either at my property so we can see it in person or at your office, I would greatly appreciate the chance to discuss this with you. Thanks for your time!

City staff has not recently met with Mr. Halloran to run through the specifics of his request, however our presumption is that he's requesting to purchase only a portion of Outlot B. There is an existing stormwater pond on the north side of Outlot B that must be maintained. If the selling of property to the Halloran's is considered, access to the remaining City owned property should be considered.

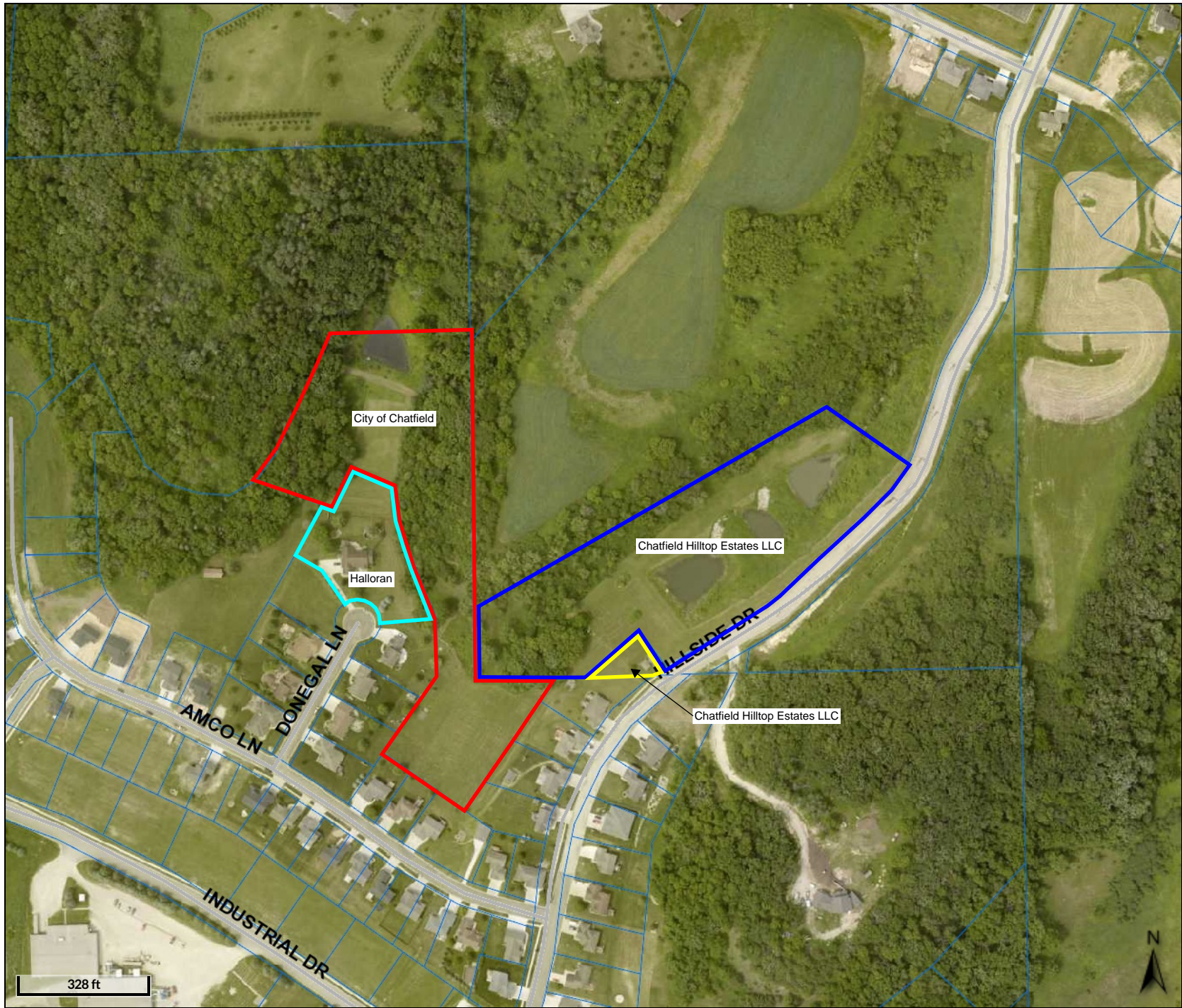
Another item of note is that it does not appear that the entire stormwater pond is on the City owned parcel. Therefore, it may be best to discuss options of obtaining property so that the entire stormwater pond is located on City land.

Also included on the aerial is the Chatfield Hilltop Estates owned property along Hillside Drive. This includes the parcel where the existing stormwater ponds are as well as the property where the booster pump station is located. Although this is not part of Mr. Halloran's request it may be worth discussing the possibility of obtaining the parcels where the stormwater ponds and booster pump station are located since the properties are adjacent to Outlot B,

Sincerely,

A handwritten signature in black ink, appearing to read "Craig Britton". The signature is fluid and cursive, with a large initial "C" and "B".

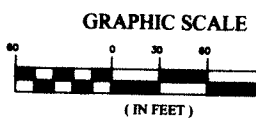
Craig Britton



Legend

- Road Centerlines
- Parcels

"OFFICIAL PLAT"
FINGERSON & DONAHOE FIRST SUBDIVISION



VICINITY MAP

CURVE	LENGTH	RADIUS	DELTA	CHORD BEARING	CHORD
C1	5.35	15.00	27.94°	N10°43'30\"	5.35
C2	7.30	15.00	27.94°	N30°43'30\"	7.30
C3	89.82	55.00	72°44'00\"	N12°21'48\"	89.82
C4	48.58	55.00	50°38'14\"	N48°16'52\"	47.01
C5	49.05	55.00	41°55'31\"	N59°27'16\"	39.30
C6	48.36	55.00	34°12'44\"	N40°20'36\"	45.00
C7	63.77	55.00	66°50'48\"	N1°01'07\"	60.28
C8	7.30	15.00	27.94°	N10°43'30\"	7.30
C9	5.78	15.00	21.59°	N11°14'20\"	5.72
C10	548.18	300.00	47°43'06\"	N62°27'41\"	544.17
C11	54.38	300.00	8°28'00\"	N84°58'57\"	54.30
C12	53.89	300.00	14°33'24\"	N18°28'57\"	83.86
C13	101.27	300.00	17°39'28\"	N30°20'27\"	101.30
C14	78.82	270.00	18°57'35\"	N38°14'27\"	78.82

BEARINGS: ALL BEARINGS ARE BASED ON THE WEST LINE OF THE SOUTHWEST QUARTER OF SECTION 4, TOWNSHIP 104 NORTH, RANGE 11 WEST WHICH IS ASSIGNED TO BEAR MONUMENT.

DRAINAGE EASEMENT: SETBACK FOR THE OPERATION AND MAINTENANCE OF ALL WATERWAYS, BOTH SURFACE AND UNDERGROUND, RUNNING OVER, UNDER, AND ACROSS SAID EASEMENT.

UTILITY EASEMENT: SETBACK FOR THE CONSTRUCTION AND MAINTENANCE OF ALL NECESSARY UNDERGROUND OR SURFACE PUBLIC UTILITIES INCLUDING THE RIGHTS TO CONDUCT DRAINAGE AND TRIMMING ON SAID EASEMENT.

UTILITY EASEMENTS ARE 10 FEET IN WIDTH ADJACENT TO STREET LINES AND 5 FEET ADJACENT TO REAR LOT LINES UNLESS OTHERWISE SHOWN.

LEGEND
U.E. UTILITY EASEMENT
D.E. DRAINAGE EASEMENT
B.P. PIPE WITH PLASTIC CAP
S. STAMPED R.L.S. #101940 SET
F. FOUND MONUMENT ARE IRON PIPES
• UNLESS OTHERWISE NOTED

BLOCK 1

OUTLOT B

NOTE:
All existing utility easements granted to the City of Chaffee were vacated on August 15th, 2003 per Document No. 333586.

GGG Engineering
Surveying
Planning
Geoffrey G. Griffin
1000 1st St. SE, Suite 200, Durango, CO 81301
P: 970-247-1888

"OFFICIAL PLAT"
FINGERSON & DONAHOE FIRST SUBDIVISION

VICINITY MAP

CURVE	LENGTH	RADIUS	DELTA	CHORD BEARING	CHORD
C44	108.90	500.00	21°08'48\"	N84°58'58\"	108.92
C45	48.78	533.00	5°14'30\"	N82°52'55\"	48.78
C46	71.86	533.00	7°43'28\"	N82°52'55\"	71.86
C47	71.86	533.00	7°43'28\"	N72°58'23\"	71.86
C48	8.87	533.00	0°57'10\"	N74°58'44\"	8.87
C49	101.87	487.00	15°08'02\"	N60°50'47\"	101.87
C50	74.77	487.00	8°10'23\"	N70°50'10\"	74.77
C51	480.50	880.00	92°56'38\"	N14°51'57\"	480.50
C52	54.28	880.00	4°59'09\"	N18°49'13\"	54.28
C53	81.78	880.00	7°50'11\"	N24°51'23\"	81.78
C54	81.78	880.00	7°50'11\"	N30°53'34\"	81.78
C55	201.13	880.00	18°57'44\"	N45°53'02\"	201.13
C56	97.85	627.00	8°53'15\"	N45°53'02\"	97.85
C57	108.04	627.00	9°58'22\"	N38°28'05\"	108.04
C58	108.04	627.00	9°58'22\"	N30°28'27\"	108.04
C59	173.20	627.00	10°49'38\"	N51°00'28\"	173.20

LEGEND
U.E. UTILITY EASEMENT
D.E. DRAINAGE EASEMENT
B.P. PIPE WITH PLASTIC CAP
S. STAMPED R.L.S. #101940 SET
F. FOUND MONUMENT ARE IRON PIPES
• UNLESS OTHERWISE NOTED

BEARINGS: ALL BEARINGS ARE BASED ON THE WEST LINE OF THE SOUTHWEST QUARTER OF SECTION 4, TOWNSHIP 104 NORTH, RANGE 11 WEST WHICH IS ASSIGNED TO BEAR MONUMENT.

DRAINAGE EASEMENT: SETBACK FOR THE OPERATION AND MAINTENANCE OF ALL WATERWAYS, BOTH SURFACE AND UNDERGROUND, RUNNING OVER, UNDER, AND ACROSS SAID EASEMENT.

UTILITY EASEMENT: SETBACK FOR THE CONSTRUCTION AND MAINTENANCE OF ALL NECESSARY UNDERGROUND OR SURFACE PUBLIC UTILITIES INCLUDING THE RIGHTS TO CONDUCT DRAINAGE AND TRIMMING ON SAID EASEMENT.

UTILITY EASEMENTS ARE 10 FEET IN WIDTH ADJACENT TO STREET LINES AND 5 FEET ADJACENT TO REAR LOT LINES UNLESS OTHERWISE SHOWN.

LEGEND
U.E. UTILITY EASEMENT
D.E. DRAINAGE EASEMENT
B.P. PIPE WITH PLASTIC CAP
S. STAMPED R.L.S. #101940 SET
F. FOUND MONUMENT ARE IRON PIPES
• UNLESS OTHERWISE NOTED

OUTLOT A

BLOCK 3

BLOCK 4

CURVE TABLE					
CURVE	LENGTH	RADIUS	DELTA	CHORD BEARING	CHORD
C1	248.99	300.00	47°24'41"	N22°41'41"	241.17
C2	54.36	330.00	8°28'00"	N84°58'57"	54.30
C3	89.82	330.00	14°33'24"	N18°28'57"	89.82
C4	101.70	330.00	17°39'28"	N30°20'27"	101.70
C5	78.82	270.00	18°57'35"	N38°14'27"	78.82
C6	101.87	487.00	15°08'02"	N60°50'47"	101.87
C7	89.82	330.00	14°33'24"	N18°28'57"	89.82
C8	101.70	330.00	17°39'28"	N30°20'27"	101.70
C9	78.82	270.00	18°57'35"	N38°14'27"	78.82
C10	101.87	487.00	15°08'02"	N60°50'47"	101.87
C11	89.82	330.00	14°33'24"	N18°28'57"	89.82
C12	101.70	330.00	17°39'28"	N30°20'27"	101.70
C13	78.82	270.00	18°57'35"	N38°14'27"	78.82
C14	101.87	487.00	15°08'02"	N60°50'47"	101.87
C15	89.82	330.00	14°33'24"	N18°28'57"	89.82
C16	101.70	330.00	17°39'28"	N30°20'27"	101.70
C17	78.82	270.00	18°57'35"	N38°14'27"	78.82
C18	101.87	487.00	15°08'02"	N60°50'47"	101.87
C19	89.82	330.00	14°33'24"	N18°28'57"	89.82
C20	101.70	330.00	17°39'28"	N30°20'27"	101.70
C21	78.82	270.00	18°57'35"	N38°14'27"	78.82
C22	101.87	487.00	15°08'02"	N60°50'47"	101.87
C23	89.82	330.00	14°33'24"	N18°28'57"	89.82
C24	101.70	330.00	17°39'28"	N30°20'27"	101.70
C25	78.82	270.00	18°57'35"	N38°14'27"	78.82
C26	101.87	487.00	15°08'02"	N60°50'47"	101.87
C27	89.82	330.00	14°33'24"	N18°28'57"	89.82
C28	101.70	330.00	17°39'28"	N30°20'27"	101.70
C29	78.82	270.00	18°57'35"	N38°14'27"	78.82
C30	101.87	487.00	15°08'02"	N60°50'47"	101.87
C31	89.82	330.00	14°33'24"	N18°28'57"	89.82
C32	101.70	330.00	17°39'28"	N30°20'27"	101.70
C33	78.82	270.00	18°57'35"	N38°14'27"	78.82
C34	101.87	487.00	15°08'02"	N60°50'47"	101.87
C35	89.82	330.00	14°33'24"	N18°28'57"	89.82
C36	101.70	330.00	17°39'28"	N30°20'27"	101.70
C37	78.82	270.00	18°57'35"	N38°14'27"	78.82
C38	101.87	487.00	15°08'02"	N60°50'47"	101.87
C39	89.82	330.00	14°33'24"	N18°28'57"	89.82
C40	101.70	330.00	17°39'28"	N30°20'27"	101.70
C41	78.82	270.00	18°57'35"	N38°14'27"	78.82
C42	101.87	487.00	15°08'02"	N60°50'47"	101.87
C43	89.82	330.00	14°33'24"	N18°28'57"	89.82
C44	101.70	330.00	17°39'28"	N30°20'27"	101.70
C45	78.82	270.00	18°57'35"	N38°14'27"	78.82
C46	101.87	487.00	15°08'02"	N60°50'47"	101.87
C47	89.82	330.00	14°33'24"	N18°28'57"	89.82
C48	101.70	330.00	17°39'28"	N30°20'27"	101.70
C49	78.82	270.00	18°57'35"	N38°14'27"	78.82
C50	101.87	487.00	15°08'02"	N60°50'47"	101.87
C51	89.82	330.00	14°33'24"	N18°28'57"	89.82
C52	101.70	330.00	17°39'28"	N30°20'27"	101.70
C53	78.82	270.00	18°57'35"	N38°14'27"	78.82
C54	101.87	487.00	15°08'02"	N60°50'47"	101.87
C55	89.82	330.00	14°33'24"	N18°28'57"	89.82
C56	101.70	330.00	17°39'28"	N30°20'27"	101.70
C57	78.82	270.00	18°57'35"	N38°14'27"	78.82
C58	101.87	487.00	15°08'02"	N60°50'47"	101.87
C59	89.82	330.00	14°33'24"	N18°28'57"	89.82
C60	101.70	330.00	17°39'28"	N30°20'27"	101.70
C61	78.82	270.00	18°57'35"	N38°14'27"	78.82
C62	101.87	487.00	15°08'02"	N60°50'47"	101.87
C63	89.82	330.00	14°33'24"	N18°28'57"	89.82
C64	101.70	330.00	17°39'28"	N30°20'27"	101.70
C65	78.82	270.00	18°57'35"	N38°14'27"	78.82
C66	101.87	487.00	15°08'02"	N60°50'47"	101.87
C67	89.82	330.00	14°33'24"	N18°28'57"	89.82
C68	101.70	330.00	17°39'28"	N30°20'27"	101.70
C69	78.82	270.00	18°57'35"	N38°14'27"	78.82
C70	101.87	487.00	15°08'02"	N60°50'47"	101.87
C71	89.82	330.00	14°33'24"	N18°28'57"	89.82
C72	101.70	330.00	17°39'28"	N30°20'27"	101.70
C73	78.82	270.00	18°57'35"	N38°14'27"	78.82
C74	101.87	487.00	15°08'02"	N60°50'47"	101.87
C75	89.82	330.00	14°33'24"	N18°28'57"	89.82
C76	101.70	330.00	17°39'28"	N30°20'27"	101.70
C77	78.82	270.00	18°57'35"	N38°14'27"	78.82
C78	101.87	487.00	15°08'02"	N60°50'47"	101.87
C79	89.82	330.00	14°33'24"	N18°28'57"	89.82
C80	101.70	330.00	17°39'28"	N30°20'27"	101.70
C81	78.82	270.00	18°57'35"	N38°14'27"	78.82
C82	101.87	487.00	15°08'02"	N60°50'47"	101.87
C83	89.82	330.00	14°33'24"	N18°28'57"	89.82
C84	101.70	330.00	17°39'28"	N30°20'27"	101.70
C85	78.82	270.00	18°57'35"	N38°14'27"	78.82
C86	101.87	487.00	15°08'02"	N60°50'47"	101.87
C87	89.82	330.00	14°33'24"	N18°28'57"	89.82
C88	101.70	330.00	17°39'28"	N30°20'27"	101.70
C89	78.82	270.00	18°57'35"	N38°14'27"	78.82
C90	101.87	487.00	15°08'02"	N60°50'47"	101.87
C91	89.82	330.00	14°33'24"	N18°28'57"	89.82
C92	101.70	330.00	17°39'28"	N30°20'27"	101.70
C93	78.82	270.00	18°57'35"	N38°14'27"	78.82
C94	101.87	487.00	15°08'02"	N60°50'47"	101.87
C95	89.82	330.00	14°33'24"	N18°28'57"	89.82
C96	101.70	330.00	17°39'28"	N30°20'27"	101.70
C97	78.82	270.00	18°57'35"	N38°14'27"	78.82
C98	101.87	487.00	15°08'02"	N60°50'47"	101.87
C99	89.82	330.00	14°33'24"	N18°28'57"	89.82
C100	101.70	330.00	17°39'28"	N30°20'27"	101.70
C101	78.82	270.00	18°57'35"	N38°14'27"	78.82
C102	101.87	487.00	15°08'02"	N60°50'47"	101.87
C103	89.82	330.00	14°33'24"	N18°28'57"	89.82
C104	101.70	330.00	17°39'28"	N30°20'27"	101.70
C105	78.82	270.00	18°57'35"	N38°14'27"	78.82
C106	101.87	487.00	15°08'02"	N60°50'47"	101.87
C107	89.82	330.00	14°33'24"	N18°28'57"	89.82
C108	101.70	330.00	17°39'28"	N30°20'27"	101.70
C109	78.82	270.00	18°57'35"	N38°14'27"	78.82
C110	101.87	487.00	15°08'02"	N60°50'47"	101.87
C111	89.82	330.00	14°33'24"	N18°28'57"	89.82
C112	101.70	330.00	17°39'28"	N30°20'27"	101.70
C113	78.82	270.00	18°57'35"	N38°14'27"	78.82
C114	101.87	487.00	15°08'02"	N60°50'47"	101.87
C115	89.82	330.00	14°33'24"	N18°28'57"	89.82
C116	101.70	330.00	17°39'28"	N30°20'27"	101.70
C117	78.82	270.00	18°57'35"	N38°14'27"	78.82
C118	101.87	487.00	15°08'02"	N60°50'47"	101.87
C119	89.82	330.00	14°33'24"	N18°28'57"	89.82
C120	101.70	330.00	17°39'28"	N30°20'27"	101.70
C121	78.82	270.00	18°57'35"	N38°14'27"	78.82
C122	101.87	487.00	15°08'02"	N60°50'47"	101.87
C123	89.82	330.00	14°33'24"	N18°28'57"	89.82
C124	101.70	330.00	17°39'28"	N30°20'27"	101.70
C125	78.82	270.00	18°57'35"	N38°14'27"	78.82
C126	101.87	487.00	15°08'02"	N60°50'47"	101.87
C127	89.82	330.00	14°33'24"	N18°28'57"	89.82
C128	101.70	330.00	17°39'28"	N30°20'27"	101.70
C129	78.82	270.00	18°57'35"	N38°14'27"	78.82
C130	101.87	487.00	15°08'02"	N60°50'47"	101.87
C131	89.82	330.00	14°33'24"	N18°28'57"	89.82
C132	101.70	330.00	17°39'28"	N30°20'27"	101.70
C133	78.82	270.00	18°57'35"	N38°14'27"	78.82
C134	101.87	487.00	15°08'02"	N60°50'47"	101.87
C135	89.82	330.00	14°33'24"	N18°28'57"	89.82
C136	101.70	330.00	17°39'28"	N30°20'27"	101.70
C137	78.82	270.00	18°57'35"	N38°14'27"	78.82
C138	101.87	487.00	15°08'02"	N60°50'47"	101.87
C139	89.82	330.00	14°33'24"	N18°28'57"	89.82
C140	101.70	330.00	17°39'28"	N30°20'27"	101.70
C141	78.82	270.00	18°57'35"	N38°14'27"	78.82
C142	101.87	487.00	15°08'02"	N60°50'47"	101.87
C143	89.82	330.00	14°33'24"	N18°28'57"	89.82
C144	101.70	330.00	17°39'28"	N30°20'27"	101.70
C145	78.82	270.00	18°57'35"	N38°14'27"	78.82
C146	101.87	487.00	15°08'02"	N60°50'47"	101.87
C147	89.82	330.00	14°33'24"	N18°28'57"	89.82
C148	101.70	330.00	17°39'28"	N30°20'27"	101.70
C149	78.82	270.00	18°57'35"	N38°14'27"	78.82
C150	101.87	487.00	15°08'02"	N60°50'47"	101.87
C151	89.82	330.00	14°33'24"	N18°28'57"	89.82
C152	101.70	330.00	17°39'28"	N30°20'27"	101.70
C153	78.82	270.00	18°57'35"	N38°14'27"	78.82
C154	101.87	487.00	15°08'02"	N60°50'47"	101.87
C155	89.82	330.00	14°33'24"	N18°28'57"	89.82
C156	101.70	330.00	17°39'28"	N30°20'27"	101.70
C157	78.82	270.00	18°57'35"	N38°14'27"	78.82
C158	101.87	487.00	15°08'02"	N60°50'47"	101.87
C159	89.82	330.00	14°33'24"	N18°28'57"	89.82
C160	101.70	330.00	17°39'28"	N30°20'27"	101.70
C161	78.82	270.00	18°57'35"	N38°14'27"	78.82
C162	101.87	487.00	15°08'02"	N60°50'47"	101.87
C163	89.82	330.00	14°33'24"	N18°28'57"	89.82
C164	101.70	330.00	17°39'28"	N30°20'27"	101.70
C165	78.82	270.00	18°57'35"	N38°14'27"	78.82
C166	101.87	487.00	15°08'02"	N60°50'47"	101.87
C167	89.82	330.00	14°33'24"	N18°28'57"	89.82
C168	101.70	330.00	17°39'28"	N30°20'27"	101.70
C169	78.82	270.00	18°57'35"	N38°14'27"	78.82
C170	101.87	487.00	15°08'02"	N60°50'47"	101.87
C171	89.82	330.00	14°33'24"	N18°28'57"	89.82
C172	101.70	330.00	17°39'28"	N30°20'27"	101.70
C173	78.82	270.00	18°57'35"	N38°14'27"	78.82
C174	101.87	487.00	15°08'02"	N60°50'47"	101.87
C175	89.82	330.00	14°33'24"	N18°28'57"	89.82
C176	101.70	330.00	17°39'28"	N30°20'27"	101.70
C177	78.82	270.00	18°57'35"	N38°14'27"	78.82
C178	101.87	487.00	15°08'0		

Joel Young

From: Chatfield, MN <noreply@ci.chatfield.mn.us>
Sent: Monday, April 25, 2022 9:19 AM
To: Joel Young
Subject: Temporary reservation of parking spots

Message submitted from the <Chatfield, MN> website.

Site Visitor Name: Jerralyn Dieter
Site Visitor Email: jerralyn04@hotmail.com

Hi Joel! This is Jerralyn Dieter. I left you a message about temporarily reserving parking spots for the Growers Market in the park.

The market starts May 5 and ends October 27. It is on every Thursday between those dates.

I would like to inquire about reserving 3 parking spaces on the north side of the park; near where we set up. It would be from 2:00 p.m. to 6 p.m on every Thursday. They would only have to be a 15-min.-limit as well. Our customers are usually in and out fairly quickly.

Since the highway construction on Hwy. 52, we have lost all of the viable spaces off of the highway. It is difficult for our customers to always get a space near the vendors. Sometimes customers to other businesses in town park in the desired reserved spaces and we lose customers due to that. We do have elderly customers that would benefit from being as close to the sidewalk and vendors as possible.

Please let me know of any forms you would need or other city staff I would need to contact. Thank you for your time!
Have a great day!

-Jerralyn Dieter