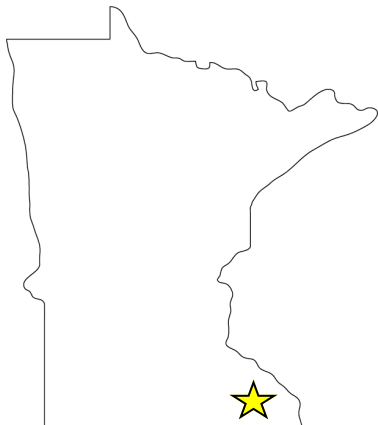


# CHATFIELD, MINNESOTA

*At a Glance – 2024*

## BY THE NUMBERS

<b>Chatfield Population:</b>	<b>2,997</b>
<b>Rochester MSA Population:</b>	<b>228,073</b>
<b>Median Household Income:</b>	\$84,918
<b>Median Home Value:</b>	\$277,813
<b>Median Age:</b>	39.3
<b>Educational Attainment:</b>	29.5%- H. School Dip. 18.2%- Some College 12.9%- Associate Deg. 21.9%- Bachelor's 11.0%- Graduate Deg.
<b>Owner Occupied Homes:</b>	77.7%
<b>Distance to Highway:</b>	0 miles (US Hwy 52) 0 miles (MN Hwy 30) 0 miles (MN Hwy 74) 9 miles (I-90 eastbd) 12 miles (I-90 westbd) 12 miles (US Hwy 14) 16 miles (US Hwy 63) 64 miles (I-35)
<b>Distance to Int'l Airport</b>	20 miles (Roch. Int'l)



## THE CHOSEN VALLEY

Chatfield, known to many as “The Chosen Valley” or “Bandtown, USA,” celebrates a long history of a very high quality of life.

Located in the valley where Mill Creek and the north branch of the Root River meet, Chatfield sits equally in both Olmsted and Fillmore Counties in southeastern Minnesota. Chatfield is only twenty miles from the world-famous Mayo Clinic and has scenic panoramic views of southern Minnesota’s Driftless Area bluffs.

Chatfield is home to many unique organizations and institutions that together create a rich social fabric for the community, such as:

- The Pope & Young Club has their international headquarters in Chatfield which maintains all of the records of big game taken by bow & arrow in North America.
- Chatfield Brass Band Music Lending Library, which holds 70,000+ titles of music in its collection and lends its music throughout the world on a daily basis.
- The oldest state-chartered bank in Minnesota.
- The oldest weekly newspaper in Minnesota.
- Over 35 acres of trout fishing access within city limits on Mill Creek and the Root River.
- Chatfield Center for the Arts performance center.

**Chatfield Economic Development Authority**

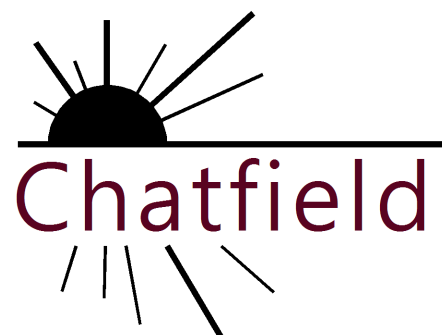
Thurber Community Center – Chatfield Municipal Building

21 Southeast Second Street

Chatfield, Minnesota 55923

**507-867-3810**

**[www.ci.chatfield.mn.us](http://www.ci.chatfield.mn.us)**



## MAJOR EMPLOYERS

<b>Company</b>	<b>#Employees</b>
Chosen Valley Care Center <i>(Skilled Nursing Care Facility)</i>	180
Strongwell Corp <i>(Fiberglass Pultrusion)</i>	140
Tuohy Furniture Corp. <i>(Wood Office Furniture Manufacturing)</i>	135
EZ Fabricating <i>(Metal Fabricating)</i>	65
Chosen Valley Public Schools <i>(Public Education)</i>	100+
Sunshine Foods <i>(Grocery Store)</i>	65
Bernard Bus <i>(Transportation)</i>	50

## ATTRACTIONS

Chatfield Center for the Arts

Pope & Young Club Headquarters & Museum

Chatfield Music Lending Library

Lost Creek Hiking Trail

Chatfield ATV Trail

Gateway to Bluff Country

Trout Streams, Hunting, and Canoeing

Oakenwald Terrace B&B

Chatfield has a long history of steady growth. Since the 1970s, Chatfield has averaged 12-14 new housing units per year. Since 2000, the historic commercial district has expanded from the traditional downtown core, north along Main Street, redeveloping several areas allowing the construction of businesses such as:

- Sunshine Foods
- F&M Community Bank
- US Post Office
- Hollermann Professional Bldg.
- Bootleg Liquor
- Kwik Trip
- Cabin Coffee
- Dollar General

Chatfield also has a rich history of fostering entrepreneurialism; regional major employers have founders that are Chatfield natives, including:

- Tuohy Furniture
- EZ Fabricating
- Geotek
- Rochester Medical
- Vertical Limit
- Metafile
- Valley Design
- Halcon Furniture
- BCG Technologies

---

### Chatfield Economic Development Authority

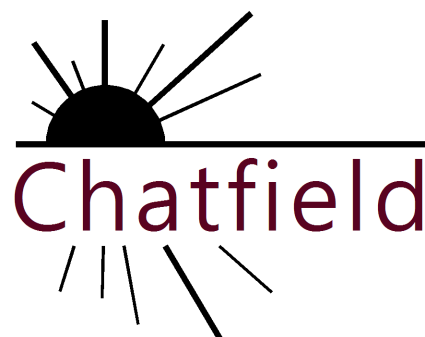
Thurber Community Center – Chatfield Municipal Building

21 Southeast Second Street

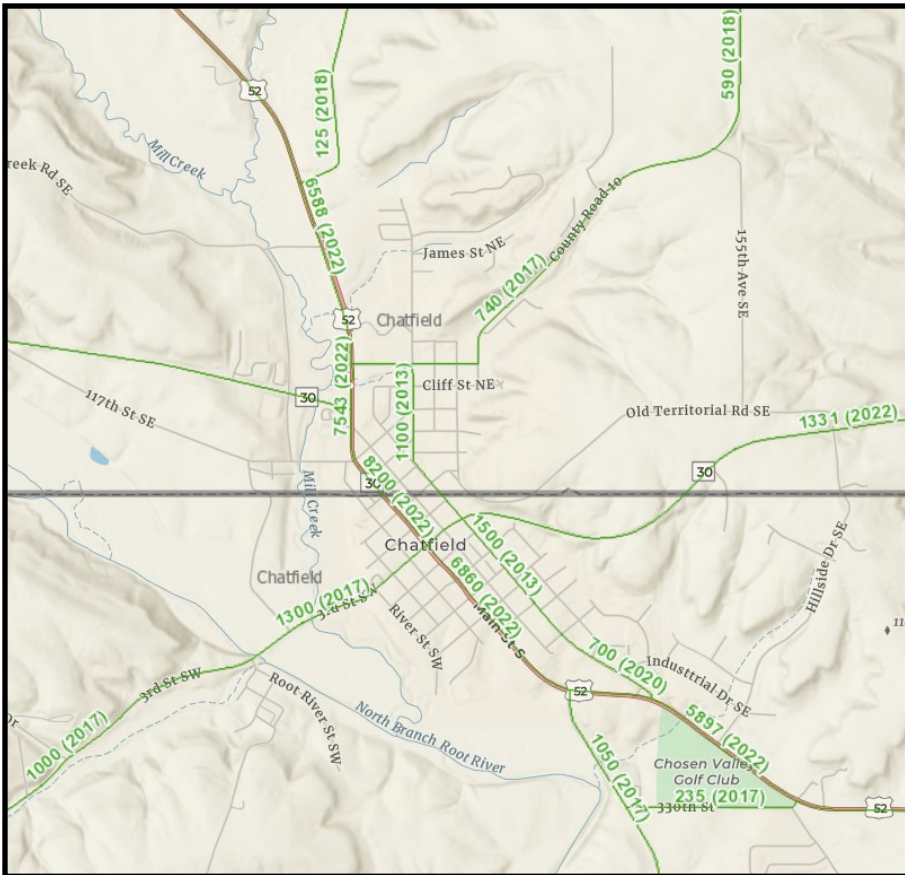
Chatfield, Minnesota 55923

**507-867-3810**

**[www.ci.chatfield.mn.us](http://www.ci.chatfield.mn.us)**



## TRAFFIC VOLUME



US Highway 52 is Chatfield's Main Street, with a daily average traffic count of about 8,000 vehicles and vibrant downtown commercial district.

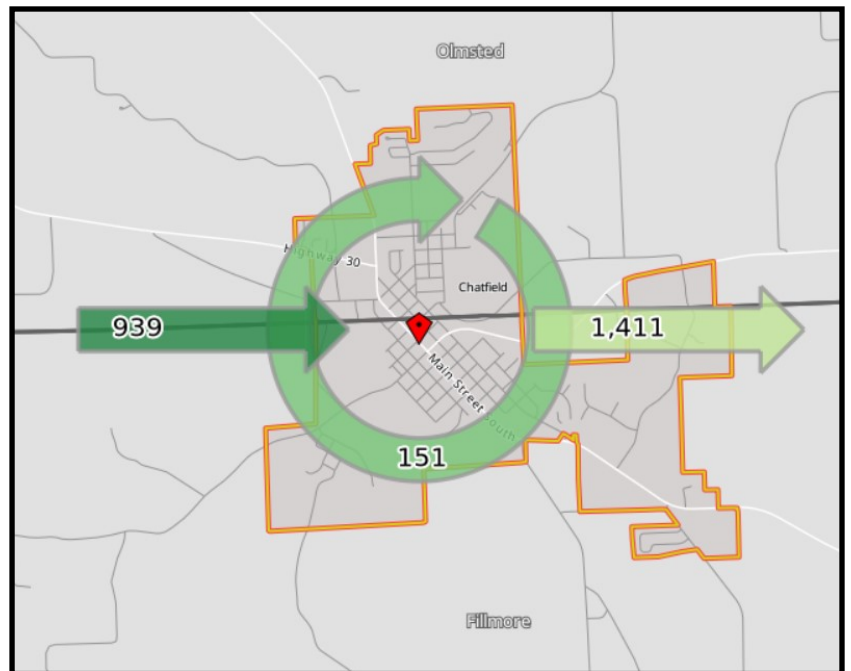
Highway 30 has an average daily count of about 1,300 vehicles.

Well maintained highways lead to nearby cities such as Rochester, Stewartville, St. Charles, Eyota, Preston, Dover, Lewiston, and Rushford.

**Fun Fact:** The traffic signal at the intersection of Highways 52/30/74 in downtown Chatfield is the only traffic signal in Fillmore County and the only remaining traffic signal on Highway 52 in Minnesota.

Everyday, 939 people who live outside of Chatfield travel to the city to work and 1,411 Chatfield residents leave to work elsewhere, primarily in Rochester. 151 Chatfield residents live and work in the city.

### 2021 Daily Workforce



## Chatfield Economic Development Authority

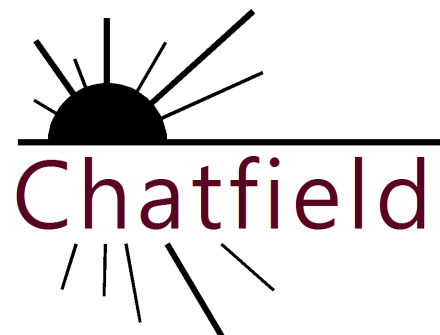
Thurber Community Center – Chatfield Municipal Building

21 Southeast Second Street

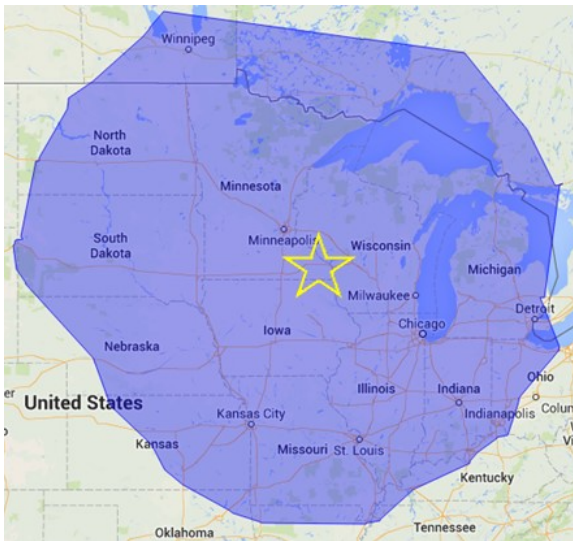
Chatfield, Minnesota 55923

507-867-3810

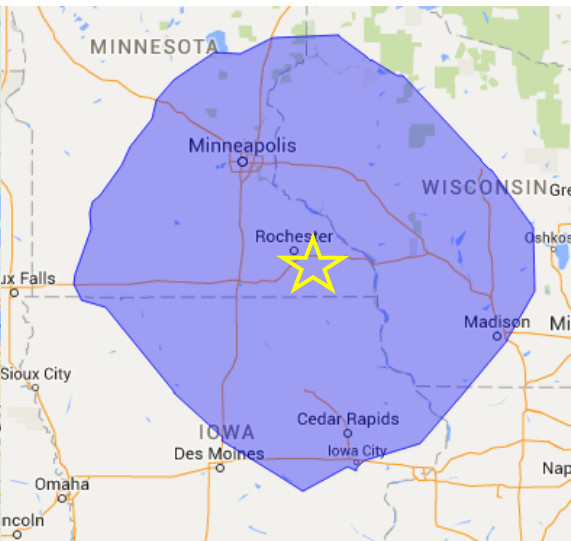
[www.ci.chatfield.mn.us](http://www.ci.chatfield.mn.us)



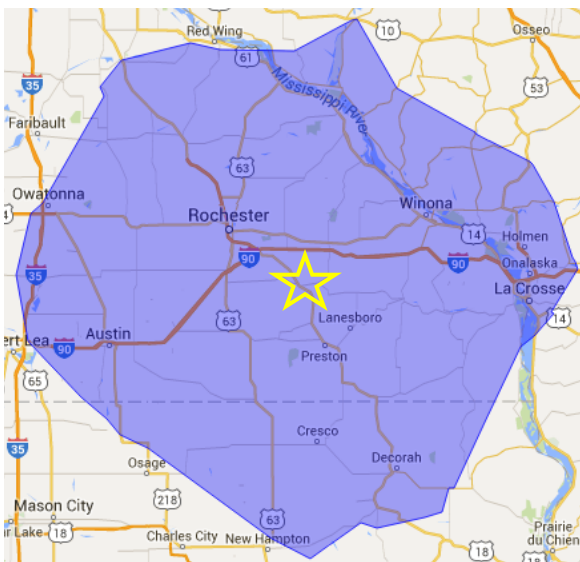
**Within a 10 Hour Drive**



**Within a 3 Hour Drive**



**Within a 1 Hour Drive**



Rochester, MN	20 min.	Thunder Bay, OT	7.5 hr.
Minneapolis/St. Paul, MN	1.5 hr.	Bismarck, ND	8 hr.
Waterloo, IA	2 hr.	Indianapolis, IN	8 hr.
Ames, IA	3 hr.	Winnipeg, MB	8.75 hr.
St. Cloud, MN	3 hr.	Wichita, KS	9 hr.
Madison, WI	3 hr.	Bentonville, AR	9.25 hr.
Des Moines, IA	3.25 hr.	Toledo, OH	9 hr.
Sioux Falls, SD	3.75 hr.	Sault Ste. Marie, MI	9.25 hr.
Duluth, MN	3.75 hr.	Detroit, MI	9.5 hr.
Milwaukee, WI	4 hr.	Minot, ND	9.5 hr.
Green Bay, WI	4.25 hr.		
Fargo, ND	5.5 hr.		
Chicago, IL	5.5 hr.		
Omaha, NE	5.5 hr.		
Kansas City, MO	6 hr.		
St. Louis, MO	7.25 hr.		

**UTILITY INFORMATION**

<b>Electric:</b>	<b>People’s Energy Cooperative</b>	<b>800.214.2694</b>
	<b>MiEnergy Cooperative</b>	<b>800.432.2285</b>
<b>Natural Gas:</b>	<b>Minnesota Energy Resources</b>	<b>800.889.9508</b>
<b>Water &amp; Sewer:</b>	<b>City of Chatfield</b>	<b>507.867.3810</b>
<b>Telecommunications:</b>	<b>Mediacom</b>	<b>855.633.4226</b>
	<b>CenturyLink</b>	<b>877.837.5738</b>
	<b>Hiawatha Broadband</b>	<b>888.474.9995</b>

**Chatfield Economic Development Authority**

Thurber Community Center – Chatfield Municipal Building

21 Southeast Second Street

Chatfield, Minnesota 55923

**507-867-3810**

**www.ci.chatfield.mn.us**

